

**Notes**

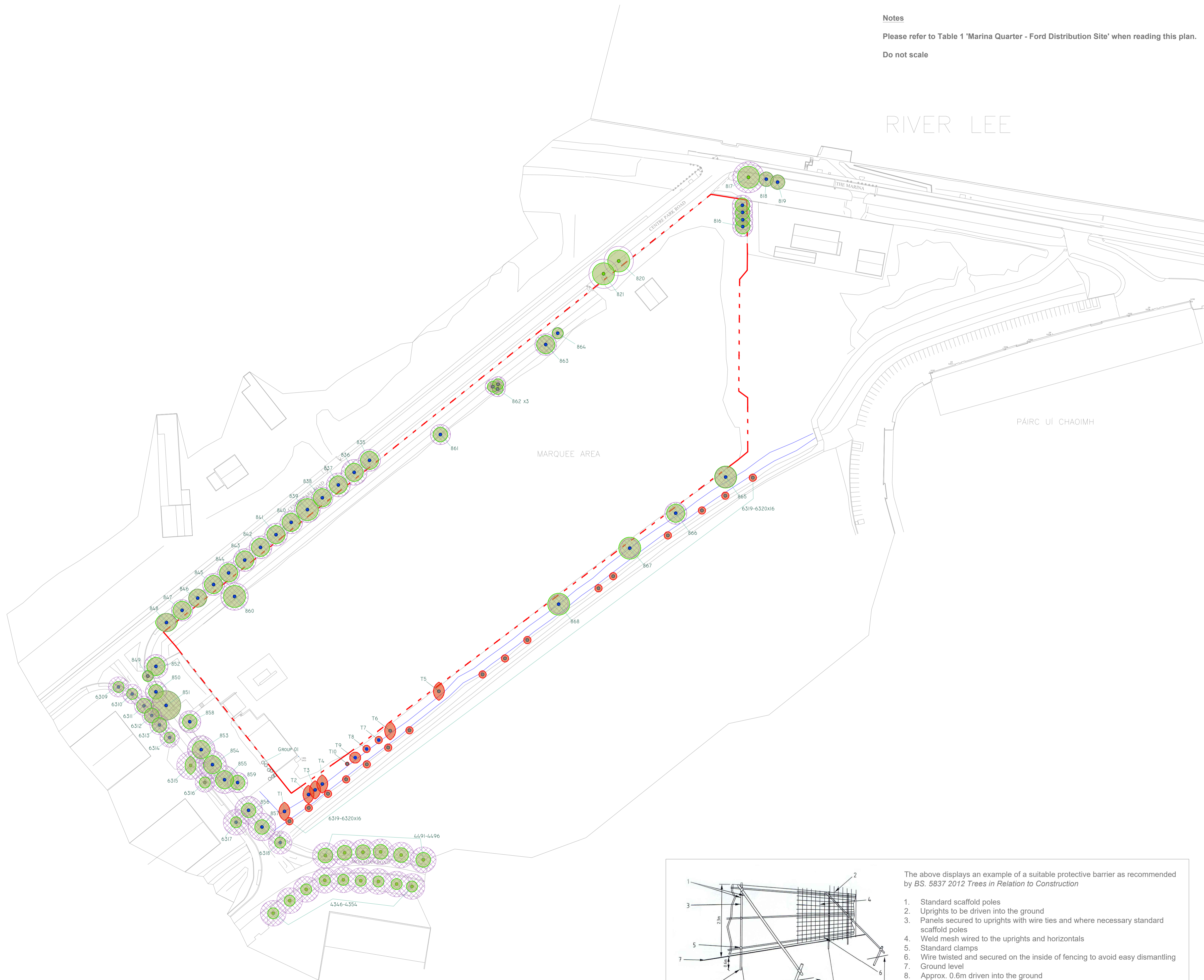
Please refer to Table 1 'Marina Quarter - Ford Distribution Site' when reading this plan.

Do not scale

RIVER LEE

PÁIRC UÍ CHAOIMH

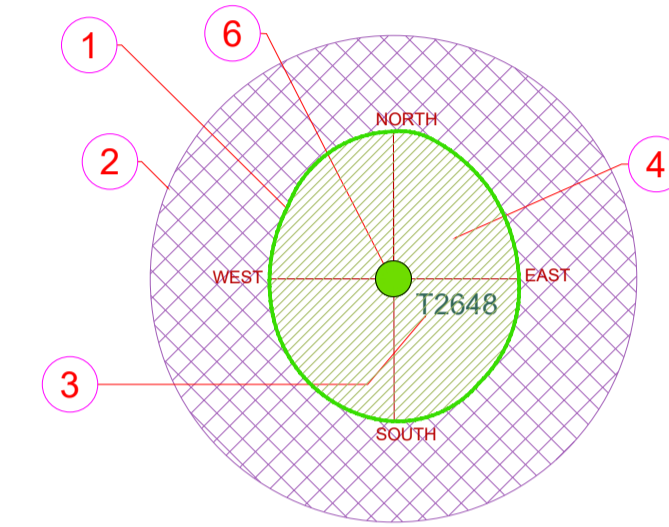
MARQUEE AREA



Rev.	Date	Description

**Legend:**

- **Category ( A, A1, A2, A3 )**  
Those of high quality and value: in such a condition as to be able to make a substantial contribution ( a minimum of 40 years )
- **Category ( C, C1, C2, C3 )**  
Those of low quality and value: currently in adequate condition to remain until new planting could be established ( a minimum of 10 years ) or young trees with a stem diameter below 150mm
- **Category ( B, B1, B2, B3 )**  
Those of moderate quality and value: those in such a condition as to make a significant contribution ( a minimum of 20 years )
- **Category ( U )**  
Those in such condition that any existing value would be lost within 10 years and which should, in the current context, be removed for reason of sound arboricultural management



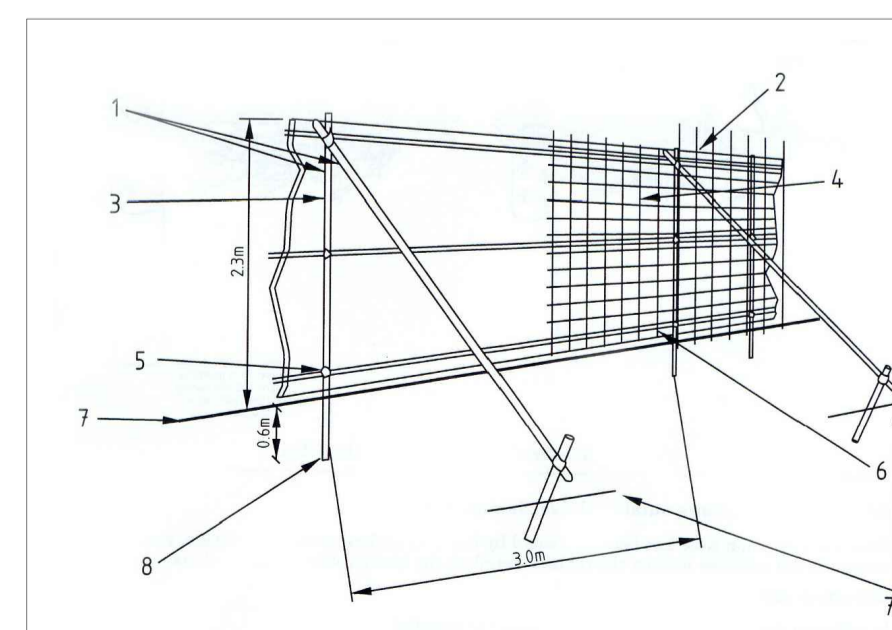
**AGE GROUPINGS**

- Y = YOUNG
- MA = MIDDLE AGE
- M = MATURE
- OM = OVER MATURE
- V = VETERAN

- 1 EXISTING TREE CANOPY BASED ON DIMENSIONS GATHERED ON SITE IN 4 DIRECTIONS, NORTH, SOUTH, EAST AND WEST
- 2 ROOT PROTECTION ZONE BASED ON 12 TIMES THE (DBH) AT CHEST HEIGHT
- 3 TREE TAG NUMBER
- 4 TREE TO BE RETAINED
- 5 TREE TO BE REMOVED
- 6 TREE CATEGORY BASED ON BS:5837 2012 CRITERIA
- 7 DECIDUOUS TREE CANOPY
- 8 EVERGREEN TREE CANOPY

**01 TABLES BS 5837-2012**

**Key**



The above displays an example of a suitable protective barrier as recommended by BS. 5837 2012 Trees in Relation to Construction

- 1. Standard scaffold poles
- 2. Uprights to be driven into the ground
- 3. Panels secured to uprights with wire ties and where necessary standard scaffold poles
- 4. Weld mesh wired to the uprights and horizontals
- 5. Standard clamps
- 6. Wire twisted and secured on the inside of fencing to avoid easy dismantling
- 7. Ground level
- 8. Approx. 0.6m driven into the ground

Client: Marina Quarter Limited

Project: Tree survey for the proposed development Former Ford Distribution Site

Drawing Title: Tree Constraints Plan - Former Ford Distribution Site

Drawn By: HR	Checked By: MG	Date: 15/07/19	Scale: 1:1000@A1
Dwg. No: MQ-TS-001	CAD File: MQ_TS_001.DWG	Issued For: Information	Rev: -

**Arbor Care**  
Unit 1a  
Crossagalla Enterprise Centre  
Ballysimon Road  
Limerick  
Ireland

Phone: +353 (0)863082808  
Fax: +353 (0)861400321  
Email: info@arborcare.ie  
Web: www.arborcare.ie

Department  
Consulting, Care Service